

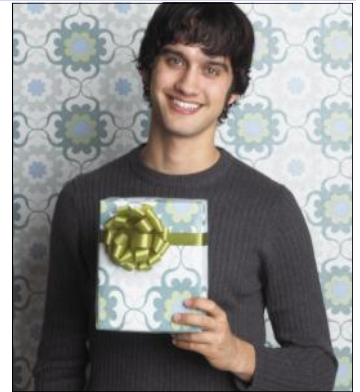
For those impacted by St. Mark's 6th – 12th Grade Ministry

MIDDLE SCHOOL NEWS

Christmas gift night

On **Wednesday, Dec. 7** the Confirmation Students will be going to Target together to purchase gifts for children or families in need. Each Confirmation Small Group will purchase and wrap items for the person they select from our Giving Tree. Students can contribute to the gift purchase in any way they choose, and any amount is fine. In the past, students have earned money by doing chores at home, babysitting, etc. **They should bring their money Dec. 7.** We also need donations of large gift bags and/or tissue. If you can help,

please send them with your child to confirmation, or you may drop them off in the church office. Questions? Please contact Jody Skogen at jskogen@faith-life.org or call the church office, 447-0100.



Youth Quake

Youth Quake parent and student meeting

Come learn more about Youth Quake at our special parent/student meeting on Wednesday, Dec. 14 at 7:30 p.m. We will meet in the Life Worship Center.

HIGH SCHOOL NEWS

H.S. mid-winter retreat Jan. 20-22

Ignite your passion for Jesus, make unbelievable memories with friends and new friends and get away for something special at the high school mid-winter retreat in Newark, Illinois. Learn more on the [high school page](#) of our web site.



YOUTH MINISTRY

Current 8th-12th graders: Register for 2012 summer mission trip

We're heading to Louisville, Ky., again next summer from June 16-24 to partner with the Youth With A Mission group. Don't miss this incredible experience! The early bird deadline is **Thursday, Dec. 8.** We have space for 70 participants, and spots are first come, first serve, so please sign up ASAP! Download the registration packet by clicking on the link on the [high school page](#) of our web site. Friends are always welcome, and scholarships are available. Additionally, we would love adults to join us as leaders.

Join us Wednesday nights for The Edge and Confirmation Ministry!

We are meeting Dec. 7 and 14. Confirmation Ministry meets at 5:30 p.m. and The Edge at 7:15 p.m. Remember, friends are always welcome!